

UPUTSTVO ZA INSTALIRANJE PROGRAMA MULTISIM 8

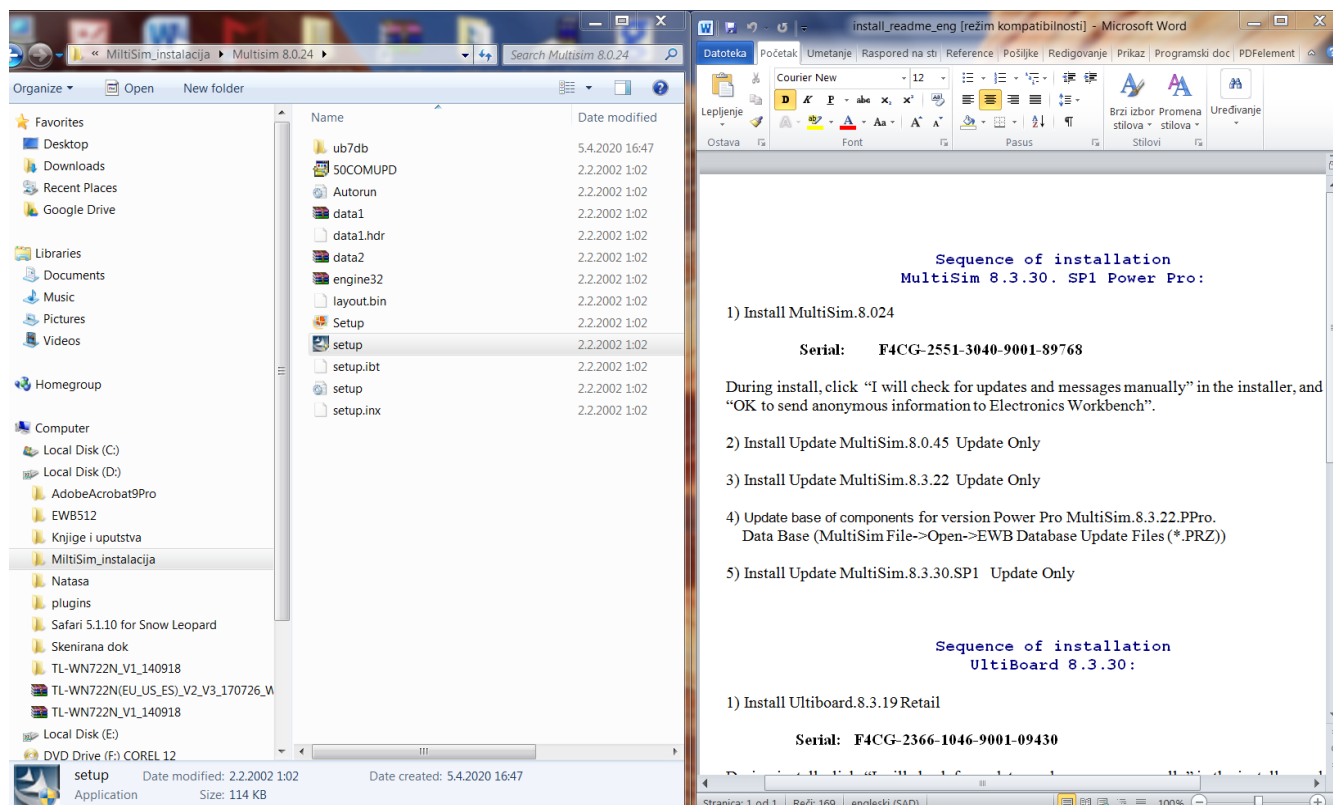
Link za downloading multisim 8.x

https://mega.nz/folder/vsMCBajR#eM3zmEhrUQSFdu_683YtdQ

Otvorite folder **MultiSim_instalacija**.

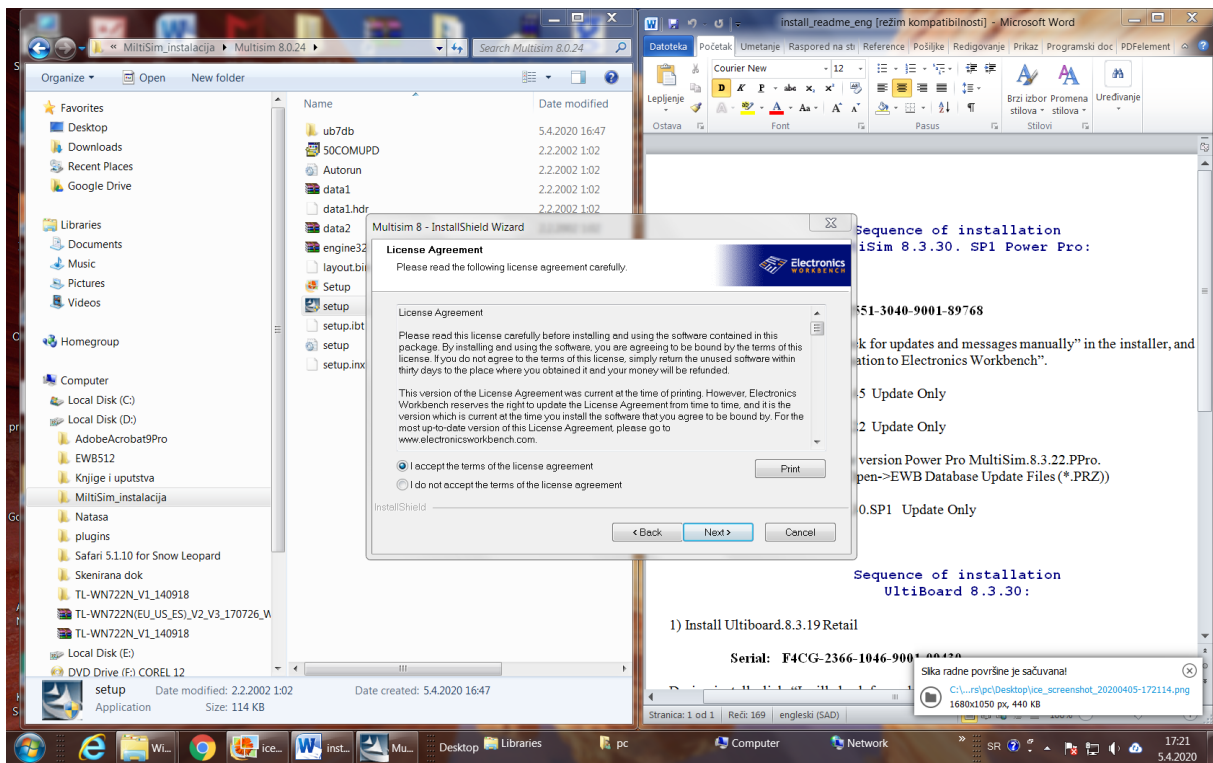
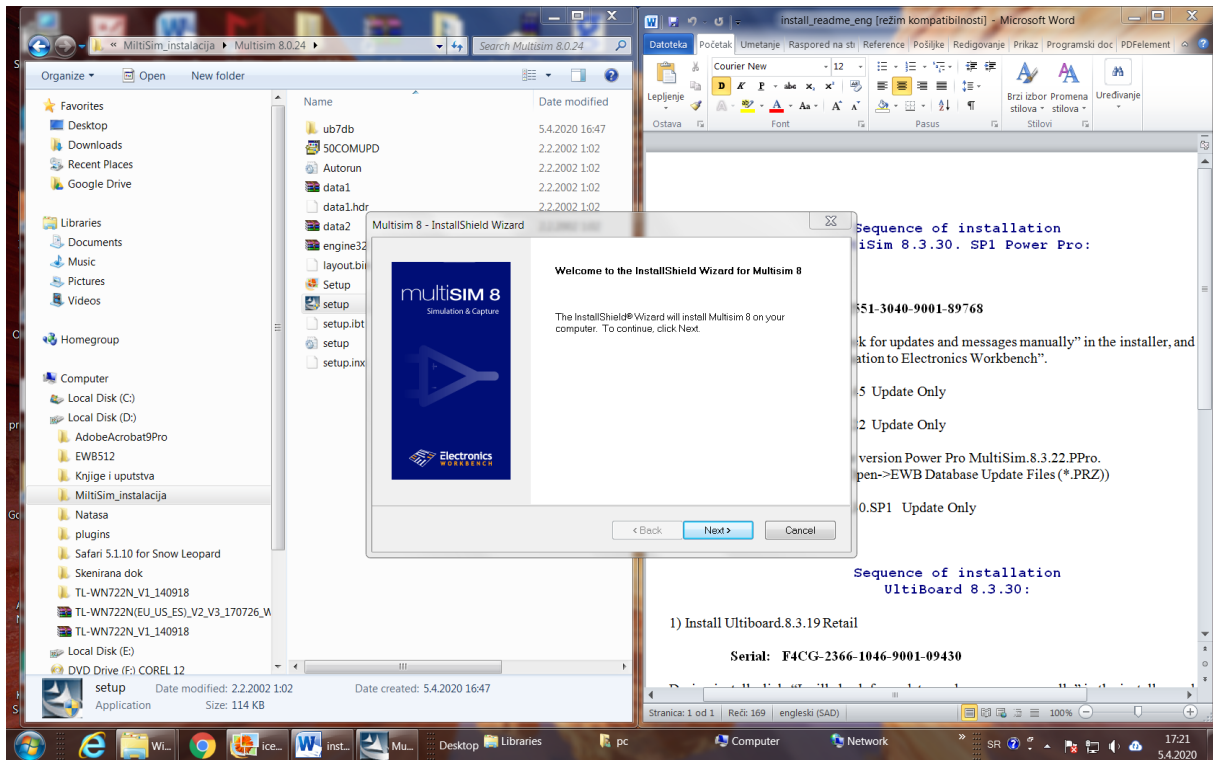
Otvorite Word dokument *install_readme_eng*. To je kratko uputstvo za instaliranje.

1. Kliknite na folder (fasciklu) pod nazivom **Multisim 8.0.24**, unutar nje na *setup*.



Potamneće se ekran računara i pojaviće se obaveštenje o tome da li želite da napravite promenu na računaru. Kliknite YES.

Onda pratite naredne korake instalacije...



Multisim 8 - InstallShield Wizard

Customer Information

Please enter your information.

User Name:
Windows User

Company Name:
VTS

Serial Number:
F4CG-2551-3040-9001-89768

InstallShield

< Back Next > Cancel

Multisim 8 - InstallShield Wizard

Support and Upgrade Utility Settings

Select from below.

The Support and Upgrade Utility will automatically notify you when software updates and important messages from Electronics Workbench are available.

Please select your desired level of service below:

- Show whenever updates or messages are available (recommended)
- Show only when updates are available
- Show only when critical updates are available
- I will check for updates and messages manually

Note: This utility will require access to the Internet. Please configure your firewall to permit us to provide you with your preferred level of service.

InstallShield

< Back Next > Cancel

Multisim 8 - InstallShield Wizard

Support and Upgrade Utility Settings

Select from below.

The Support and Upgrade Utility can be configured to collect information about your hardware and operating system. This information is saved anonymously and is used by Electronics Workbench to design products to better serve you.

Electronics Workbench's policy may be found by clicking on the button below.

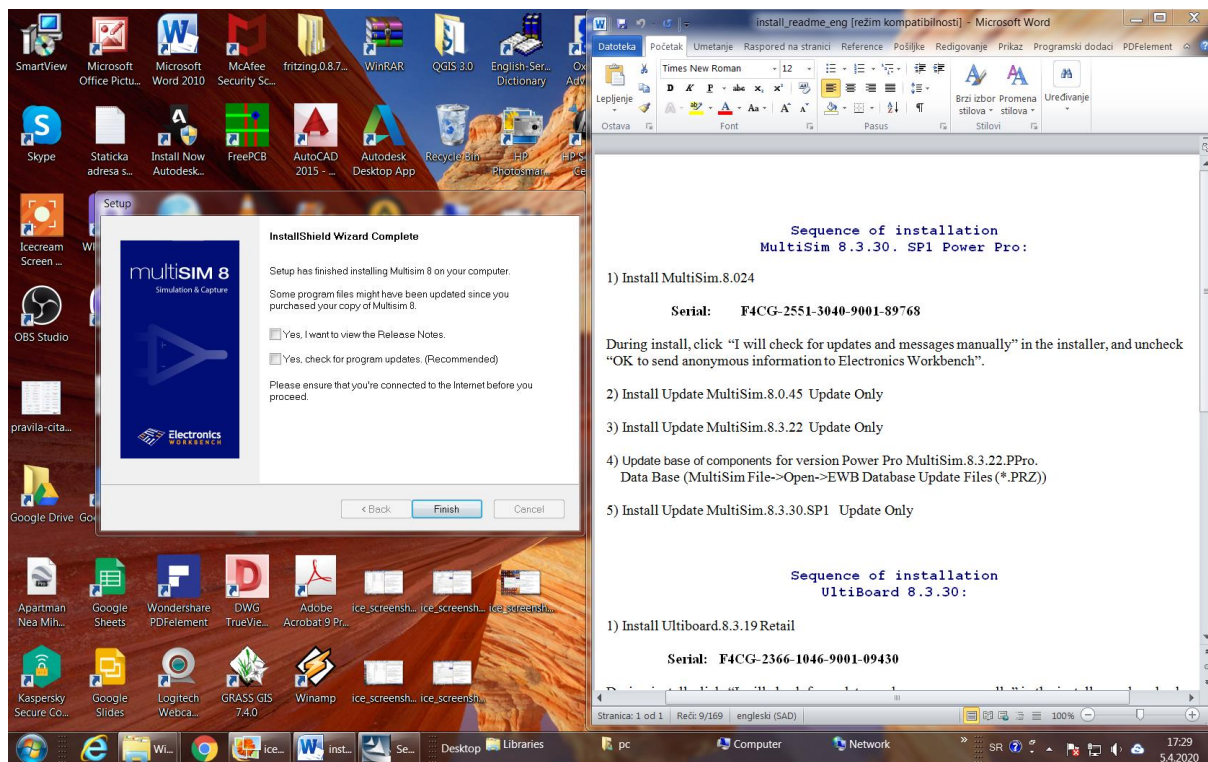
[Privacy Policy](#)

OK to send anonymous information about my computer hardware to Electronics Workbench

Note: You can modify these settings by clicking on "Settings" in the Support and Upgrade Utility.

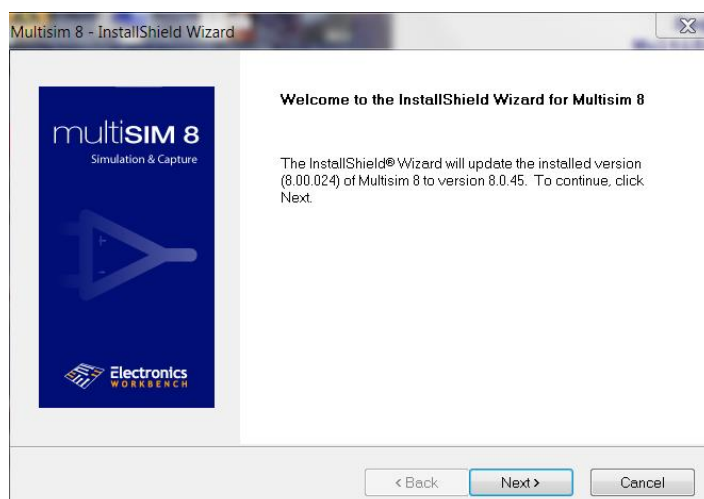
InstallShield

< Back Next > Cancel



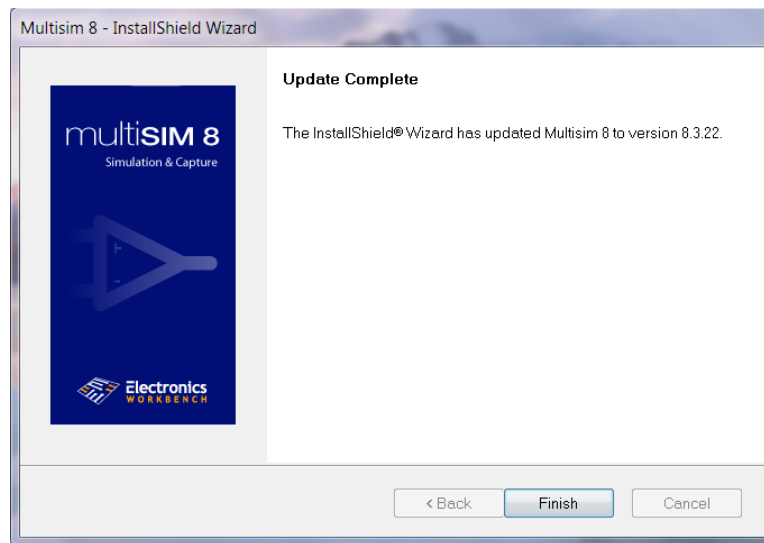
Odčekirati oba polja i klik na *Finish*.

2. Kliknite na folder (fasciklu) pod nazivom **Update to 8.0.45**, unutar nje na *setup*.



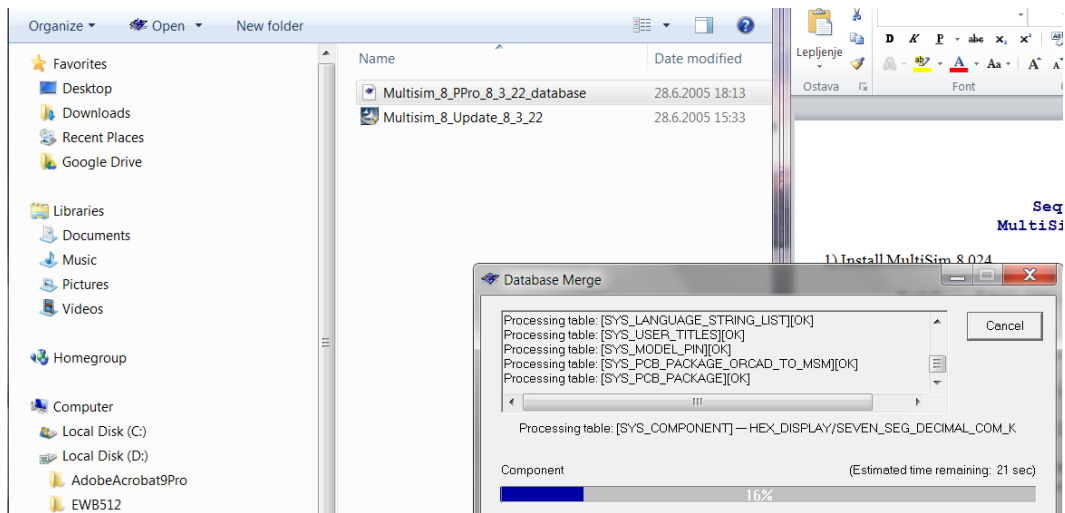
Klikom na *Next* instaliraće se Update vrlo brzo.

3. Kliknite na folder (fasciklu) pod nazivom **Update 8.3.22**, unutar nje na *setup*. Klikom na *Next* instaliraće se Update vrlo brzo. Potom, *Finish*.

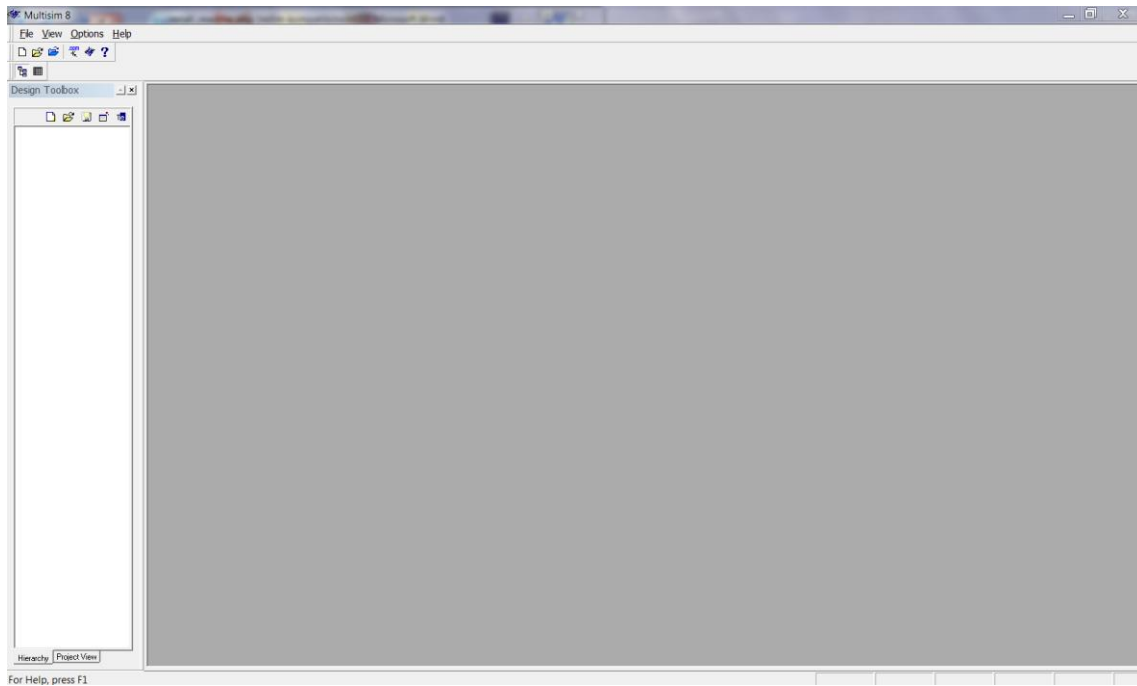


4. Nakon toga, unutar fascikle pod nazivom **Update 8.3.22**, kliknite na fajl **Multisim_8PPro_8_3_22_database**, to je Update base of components for version Power Pro MultiSim.8.3.22.PPro.

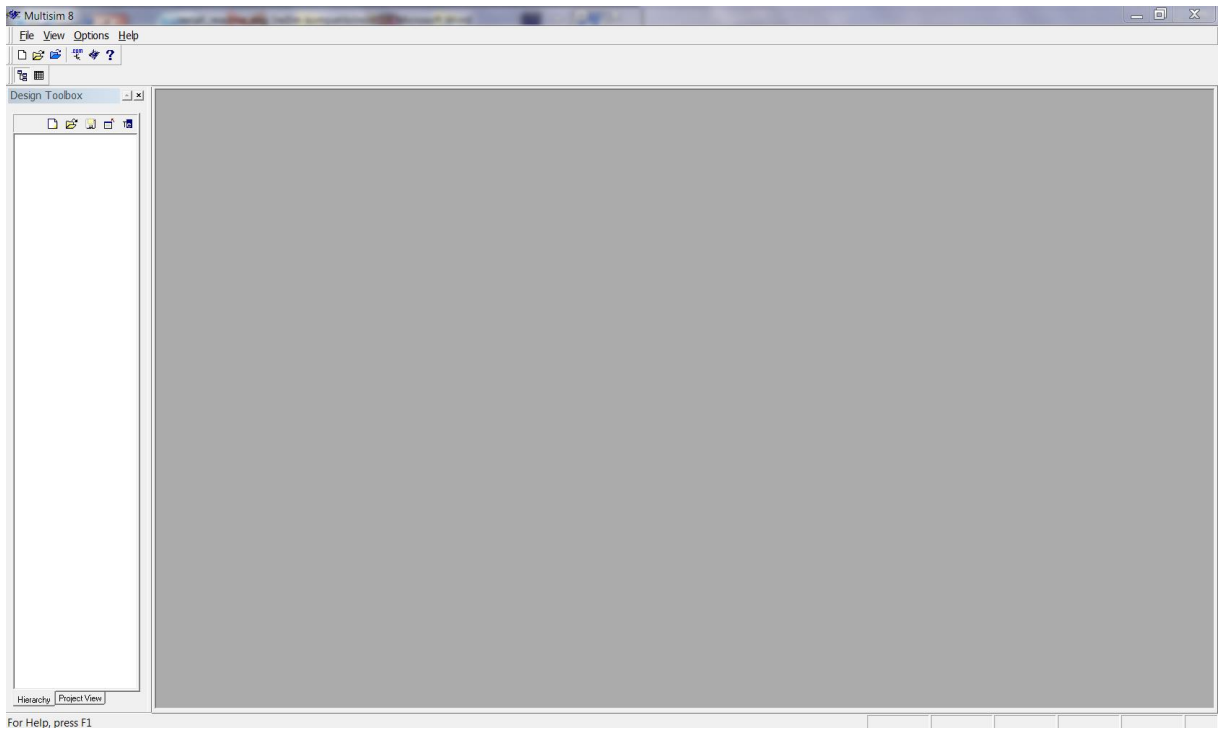
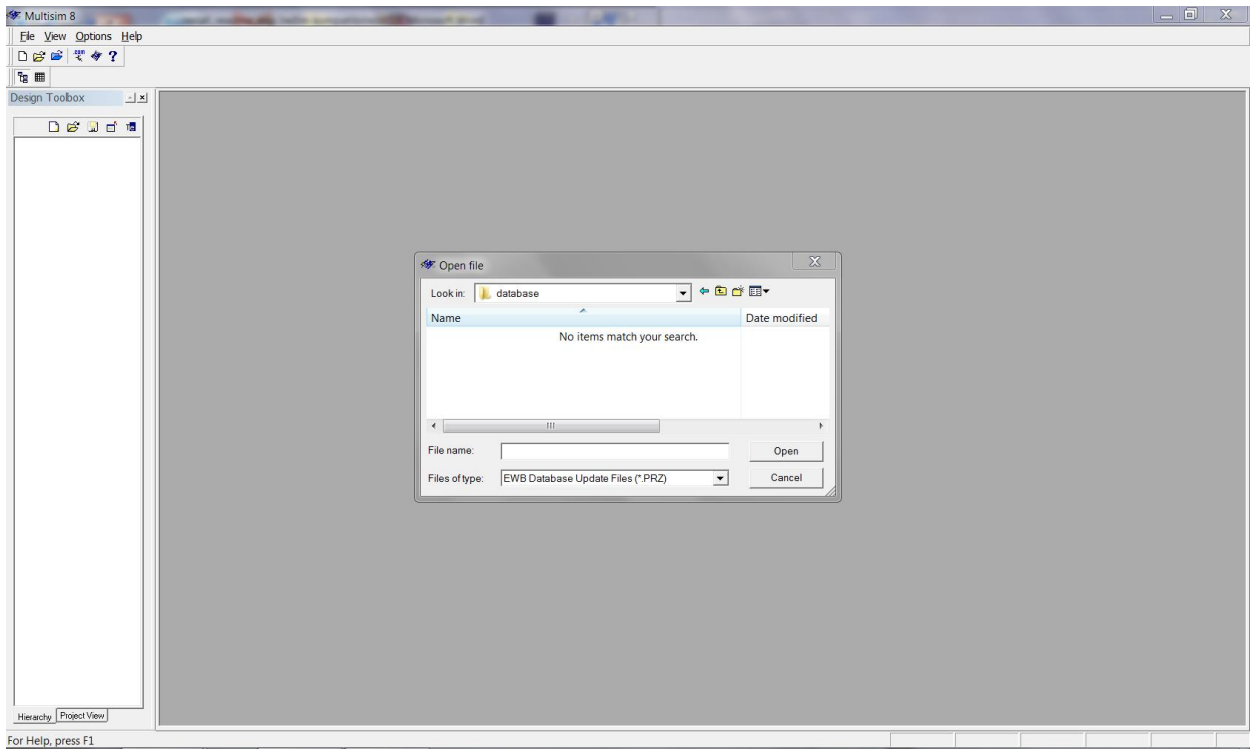




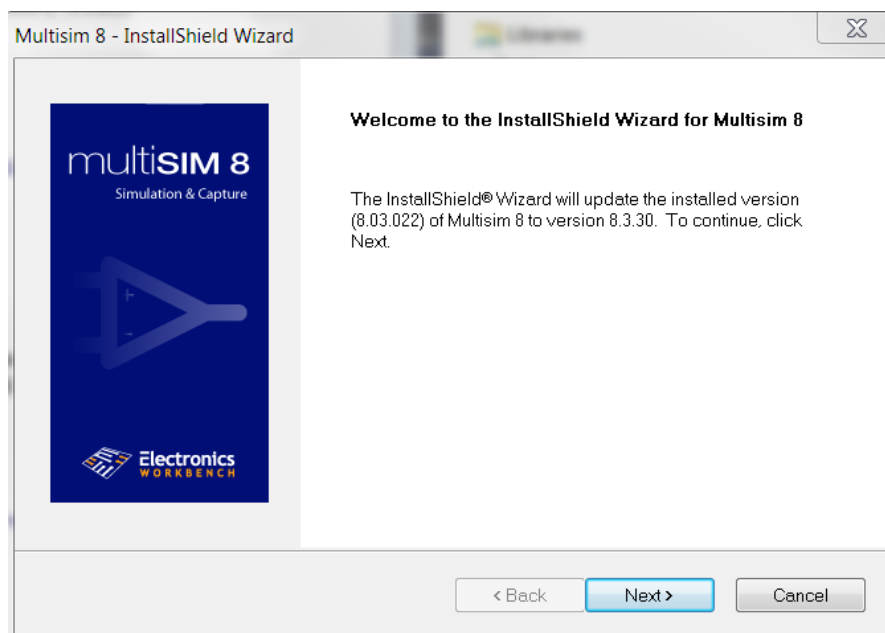
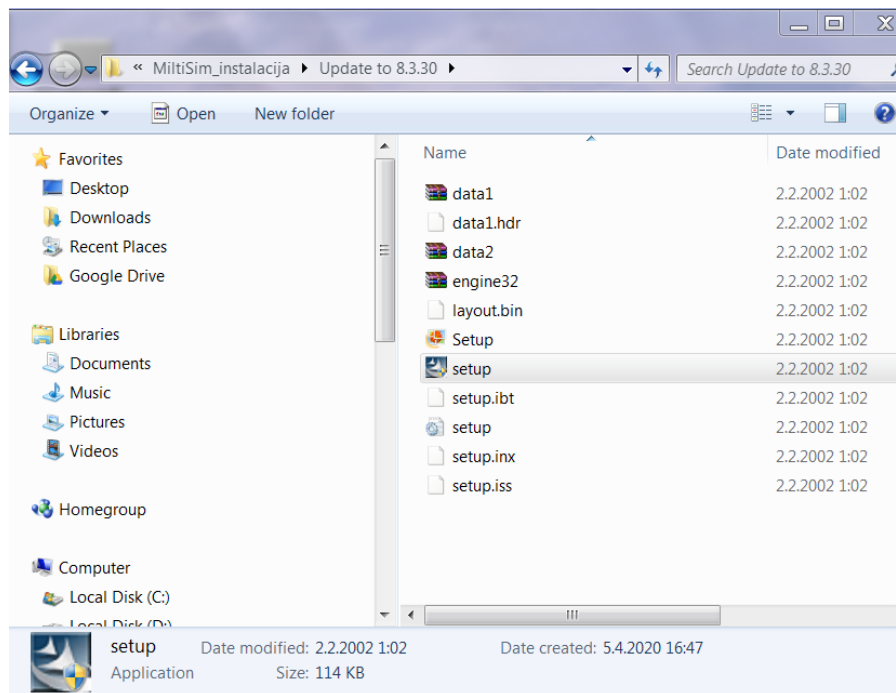
Instaliraće se baza elemenata. Otvoriće se prozor na celom ekranu pod nazivom MiltiSim 8.

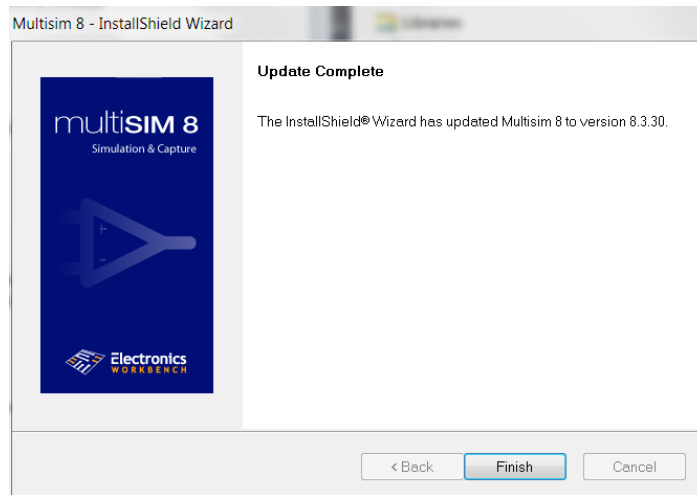


Kliknite na MultiSim 8/ File -> Open -> EWB Database Update Files (*.PRZ)) i zatvorite prozor.

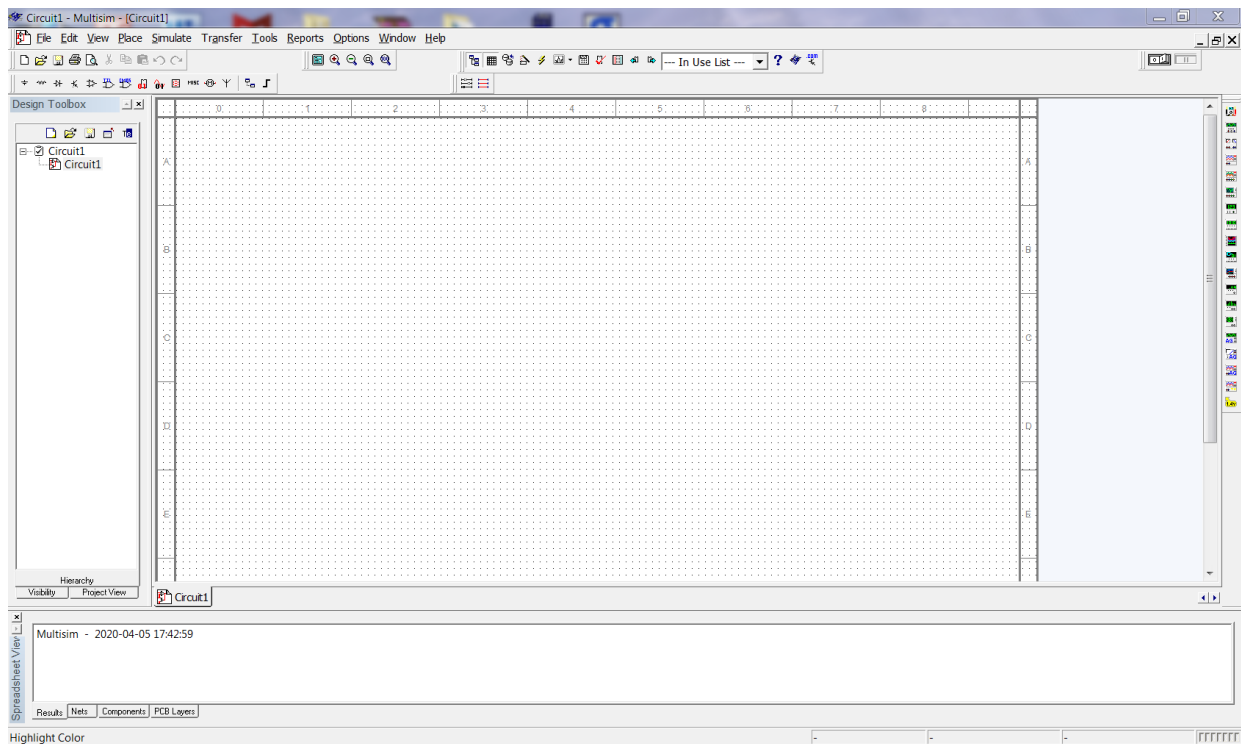


5. Unutar glavnog foldera kliknite na folder (fasciklu) pod nazivom **Update 8.3.30**, unutar nje na *setup*.

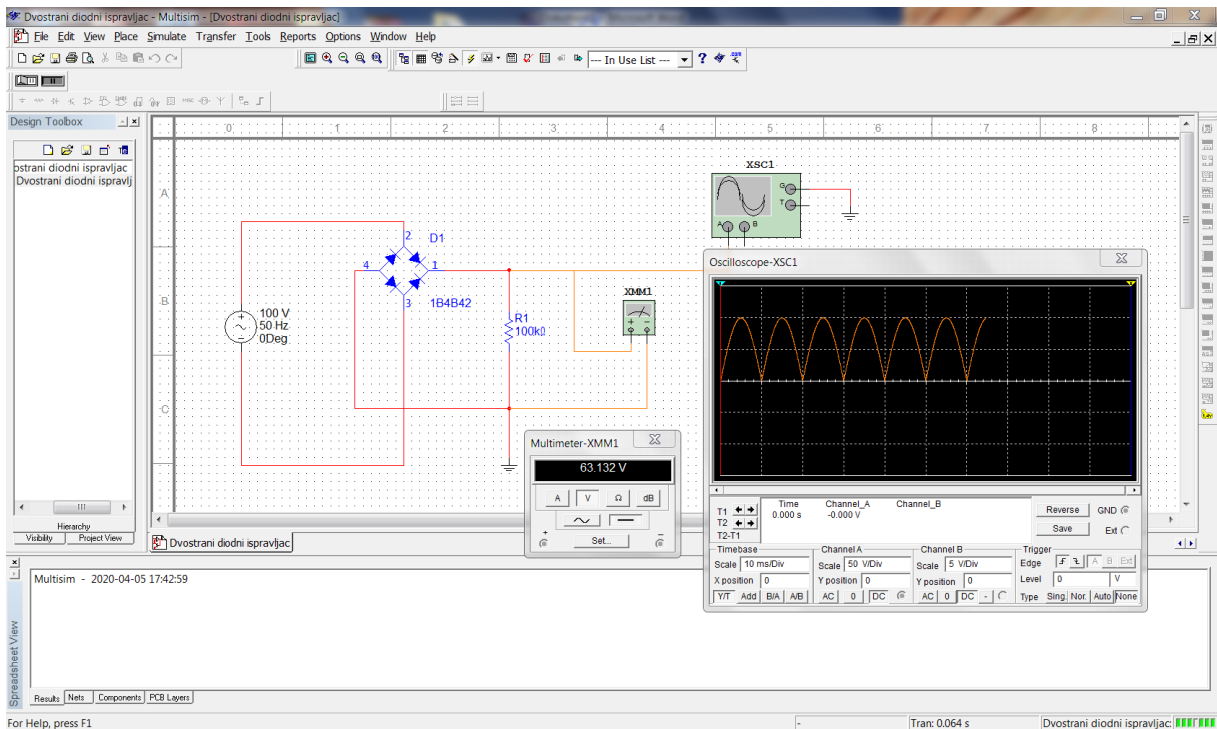




Nakon završetka i ovog updatea, možete otvoriti program klikom na Windows Start/ Multisim 8.



Primer električne šeme „Dvostranog diodnog ispravljača“, koja je vezana na jednosmerni voltmetar (izabere se Multimeter) i osciloskopa.



Napomena:

Prilikom snimanja električne šeme *File/Save As* možete napraviti folder i smestiti ga na željenoj lokaciji. Ako ne izaberete željeni folder, program automatski snima tamo gde je instaliran program. Obratite pažnju na to da je instaliran program na: ... Electronics Workbench / EWB8.

Uskoro sledi audio-video uputstvo kako se crta električna šema u programu Multisim 8 i kako se biraju i vezuju virtuelni instrumenti na šemu električnog kola.

Nataša Nešić